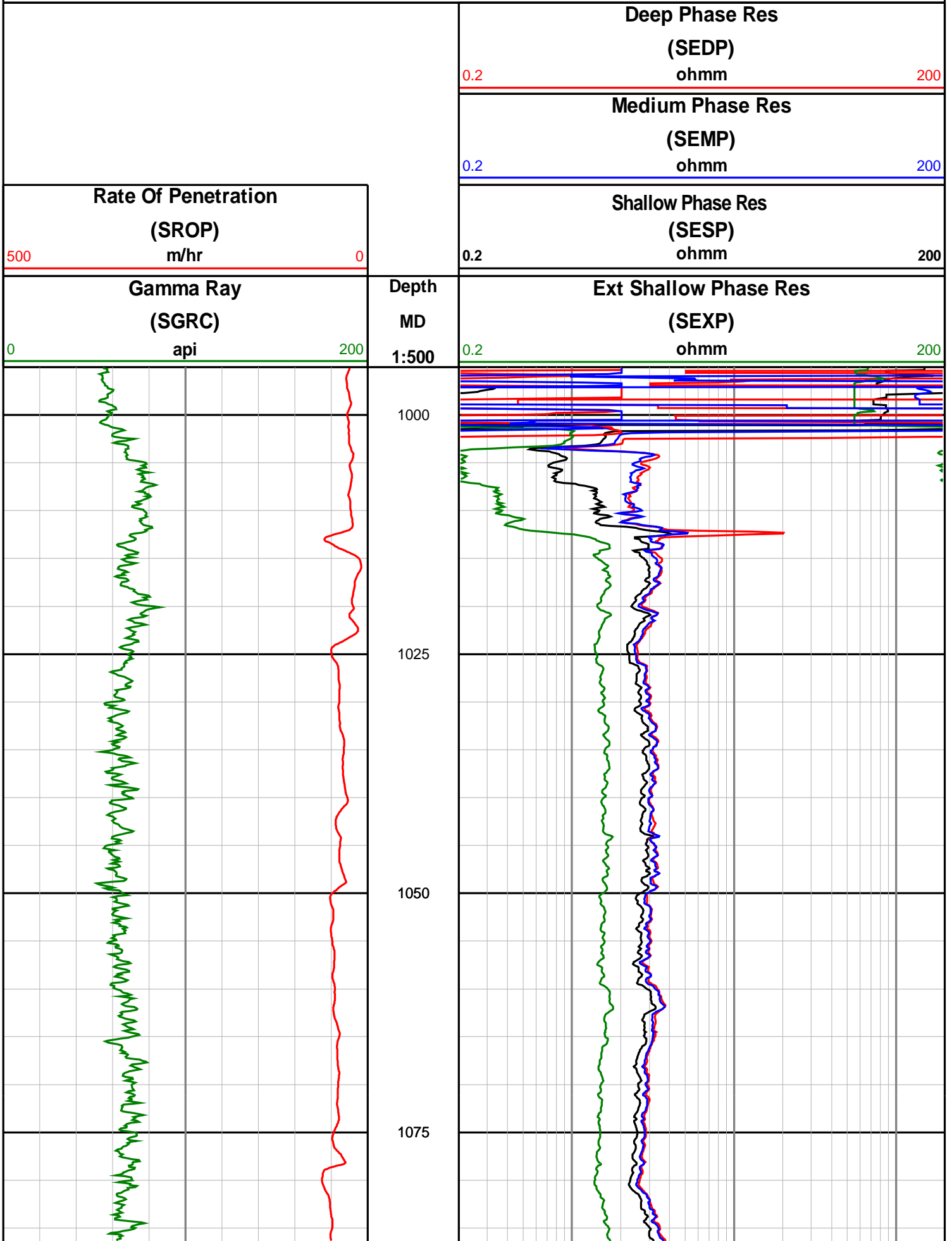


Anzon Australia Ltd

Basker-5

Realtime/Recorded LWD Log (Permanent Datum - LAT)





1100

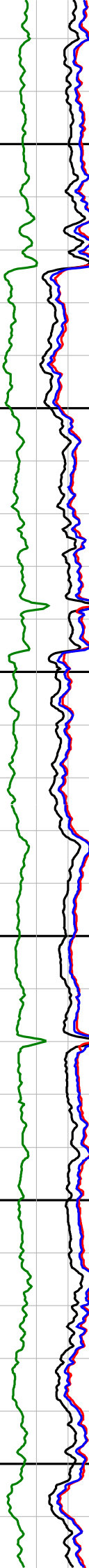
1125

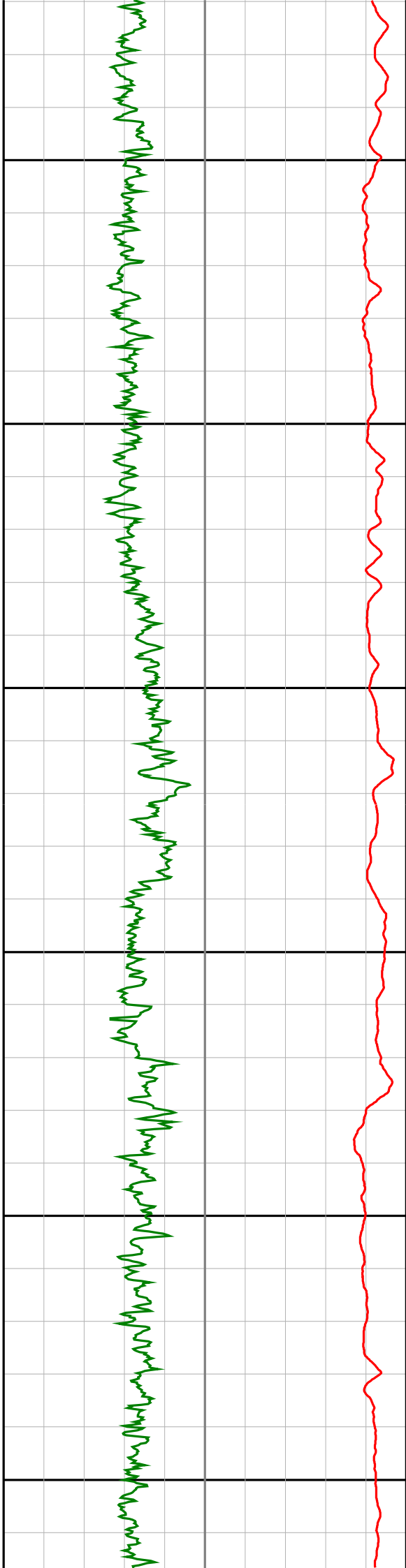
1150

1175

1200

1225





1250

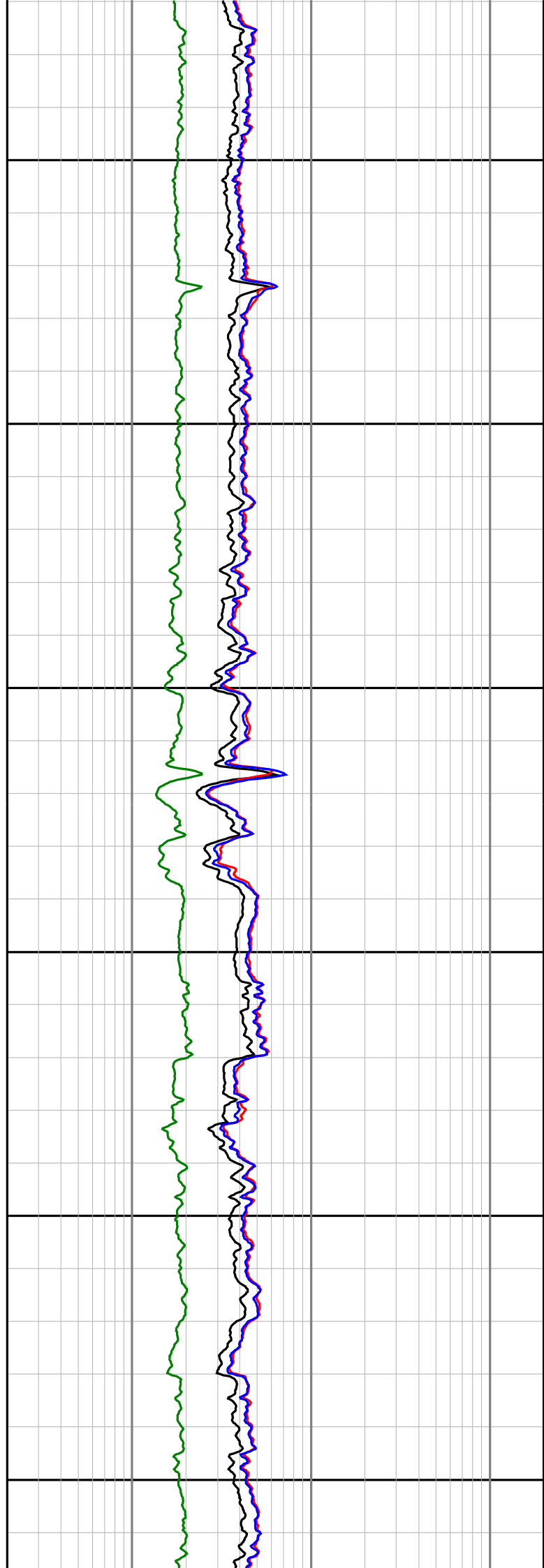
1275

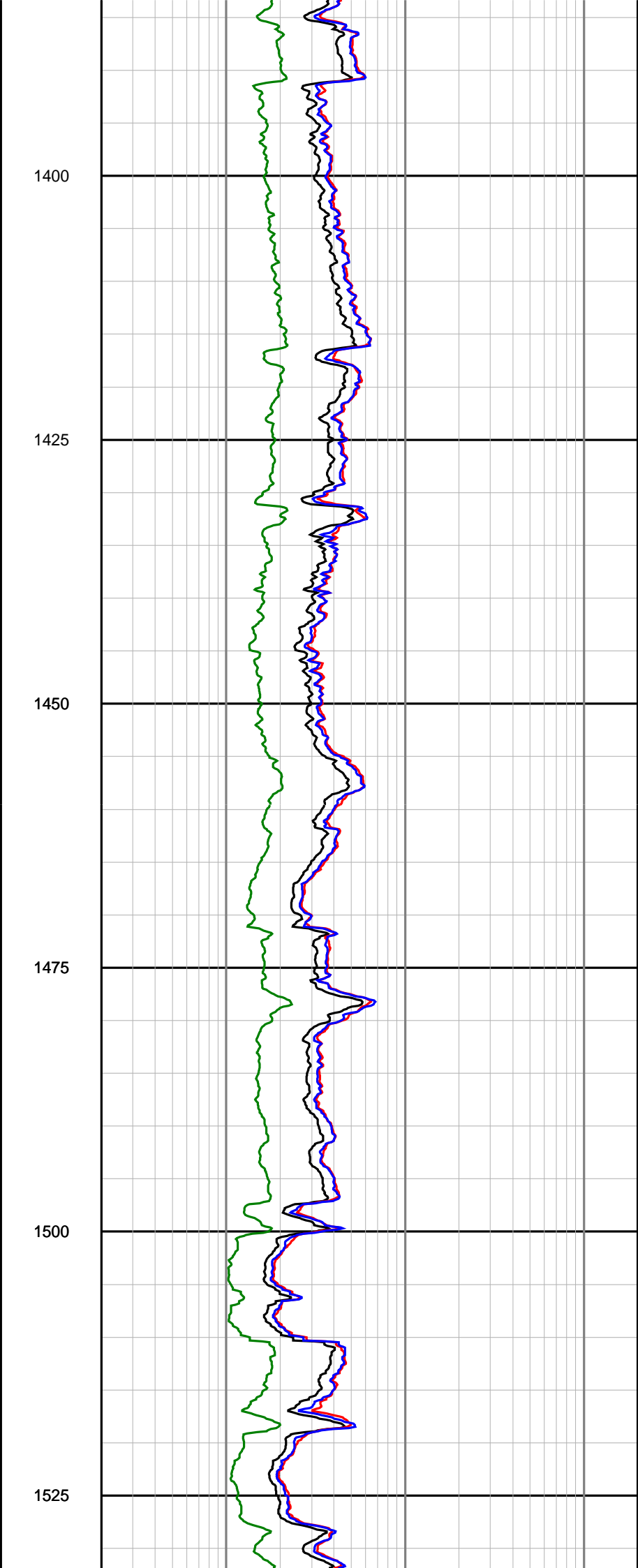
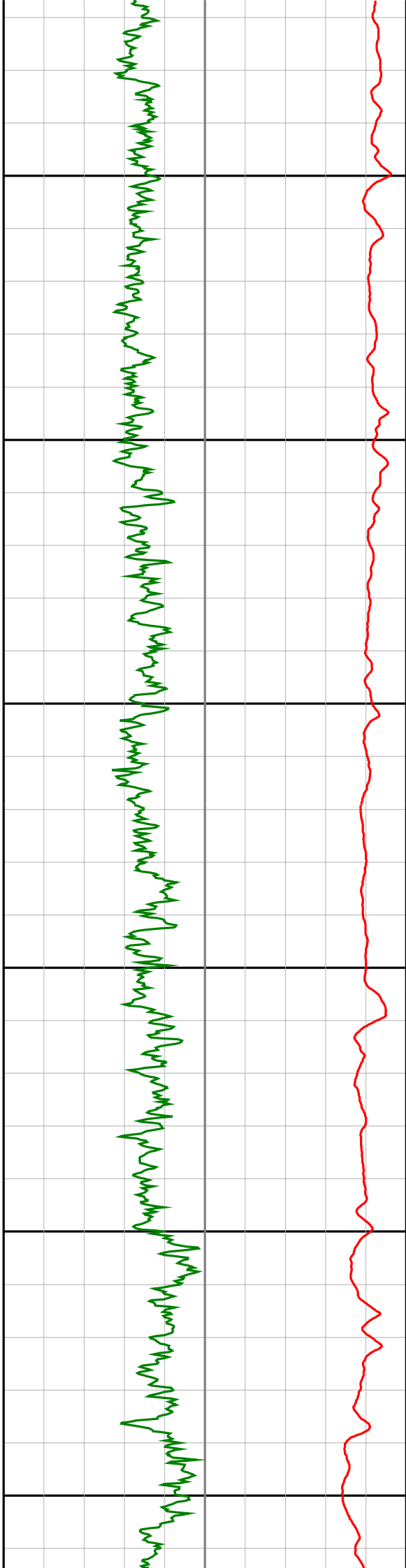
1300

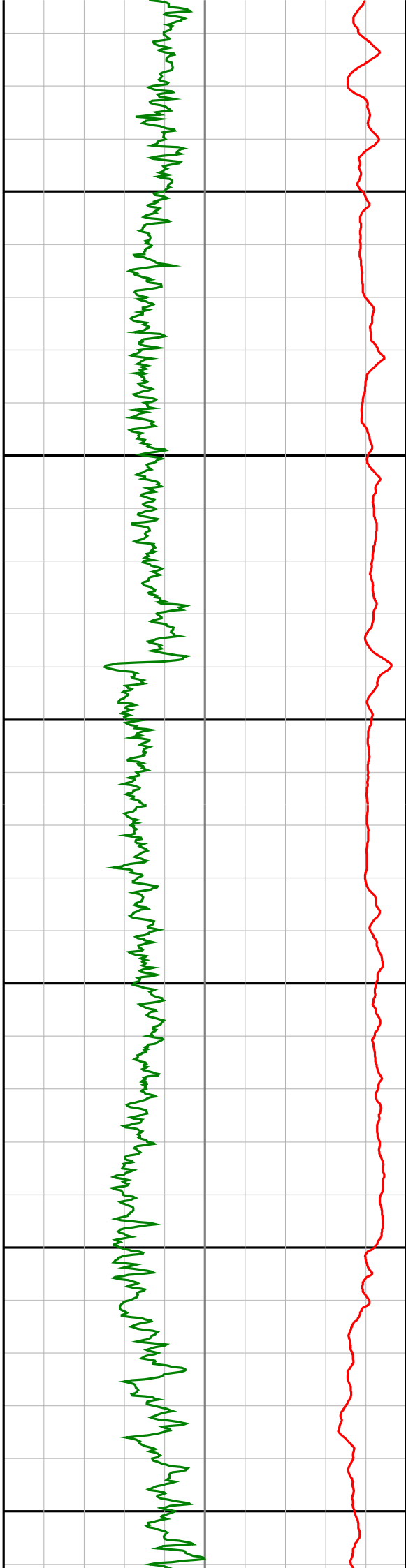
1325

1350

1375







1550

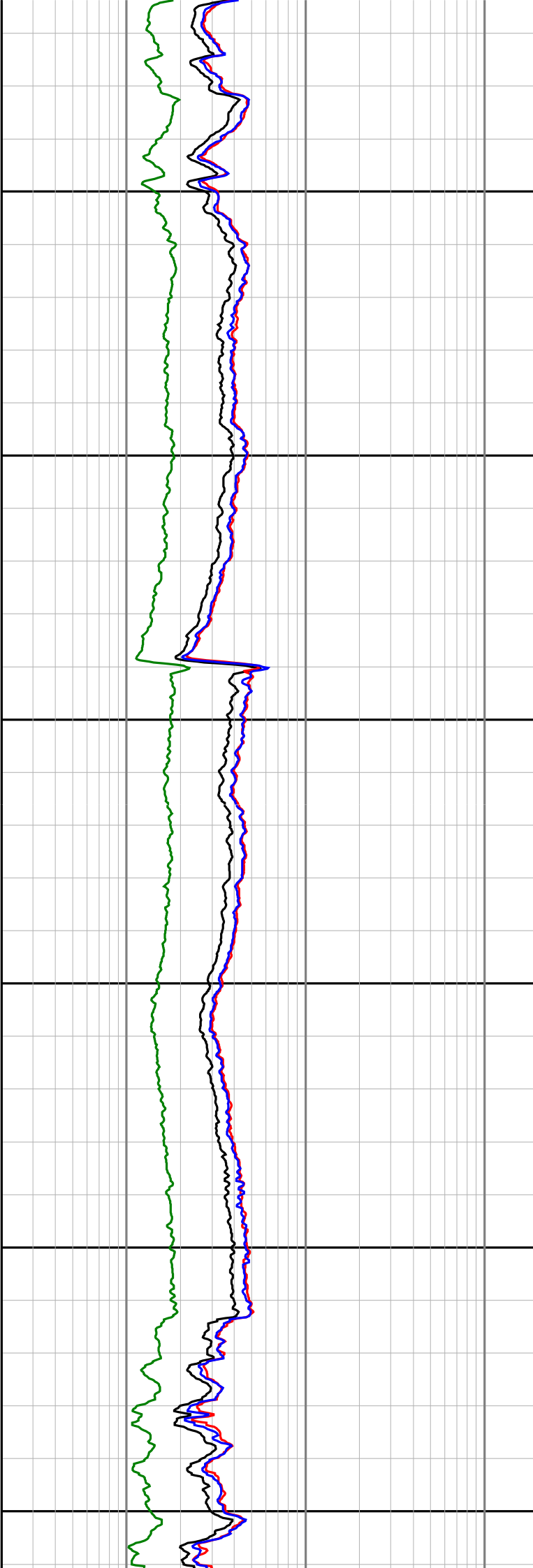
1575

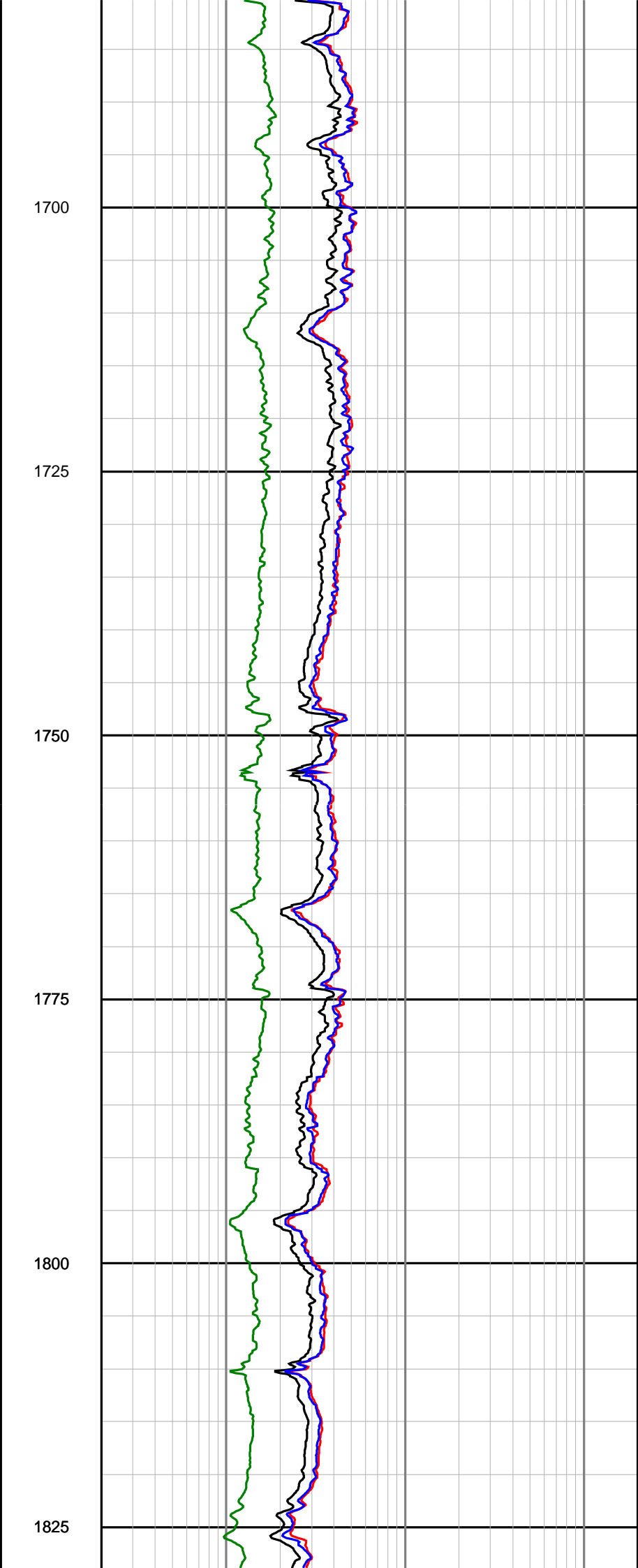
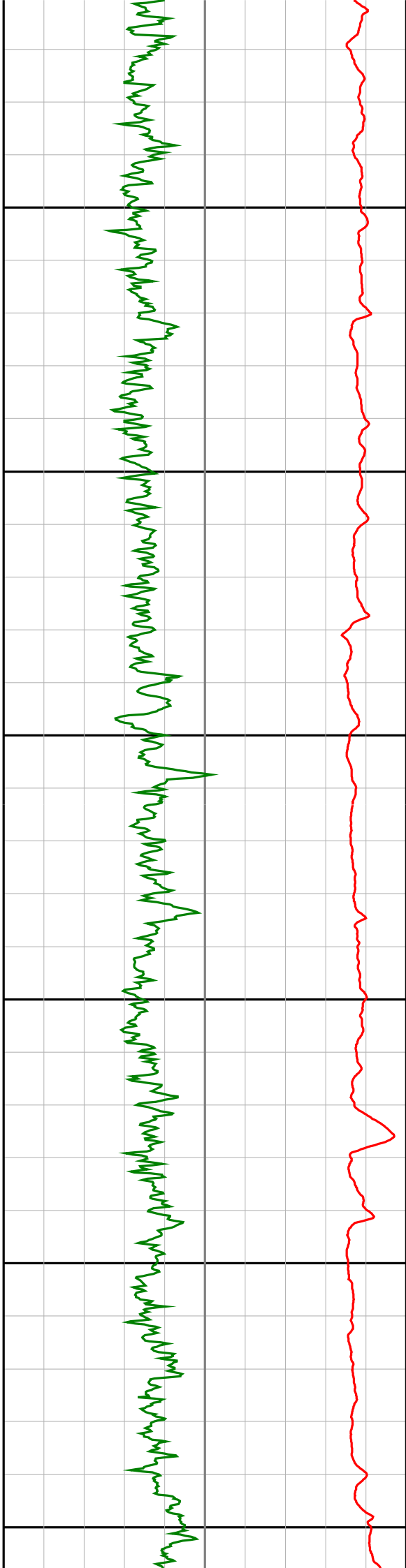
1600

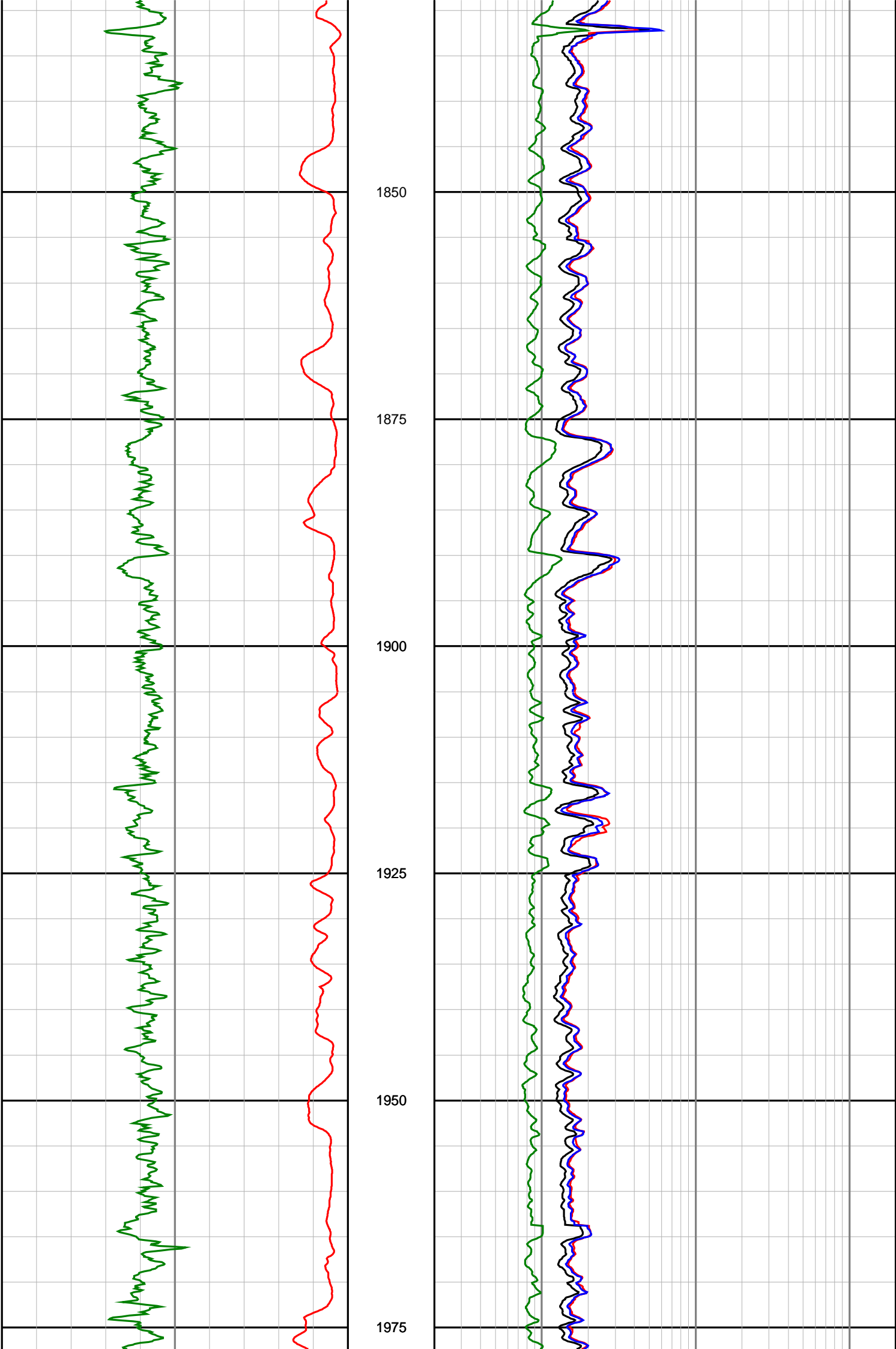
1625

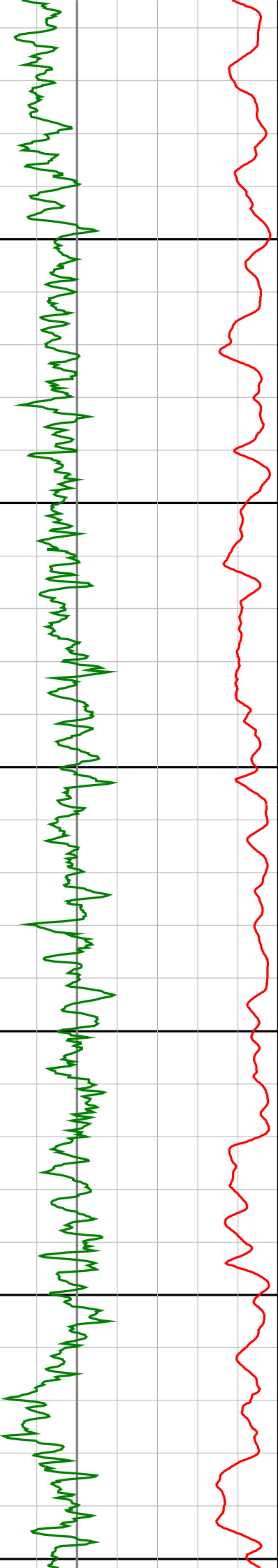
1650

1675









2000

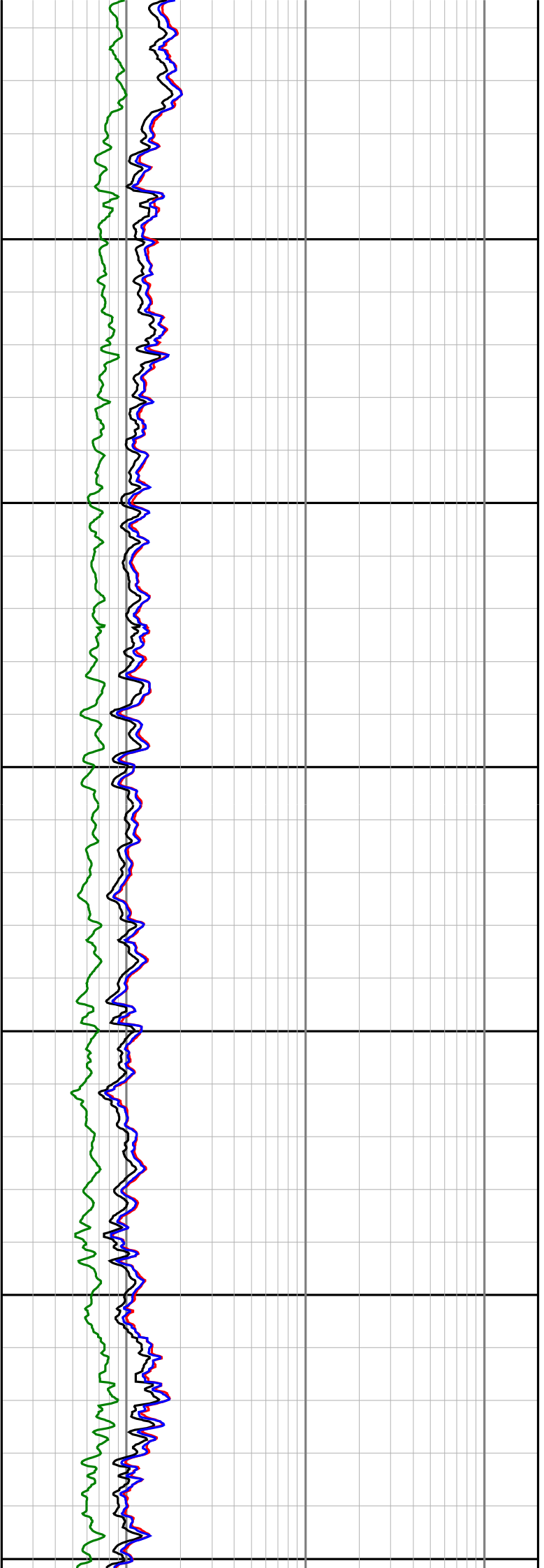
2025

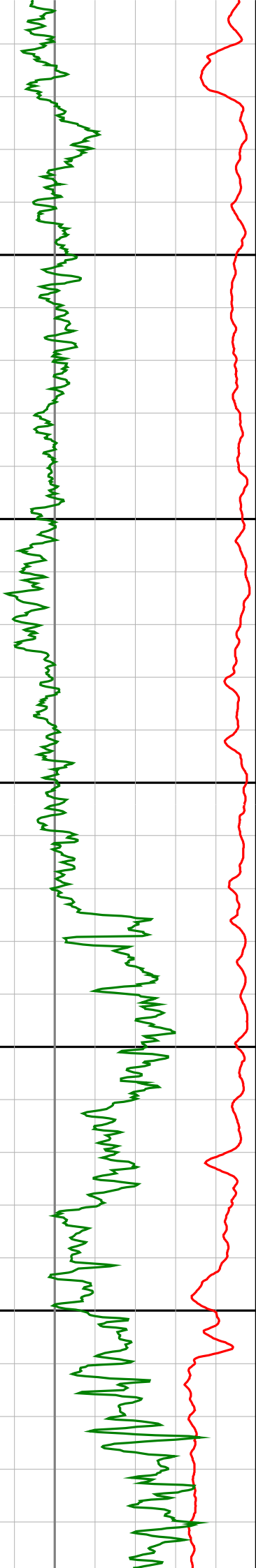
2050

2075

2100

2125





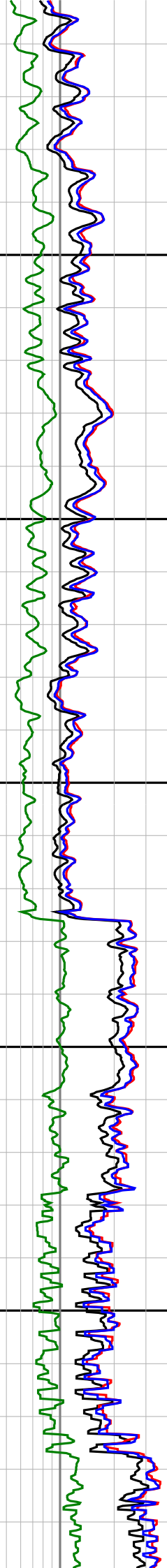
2150

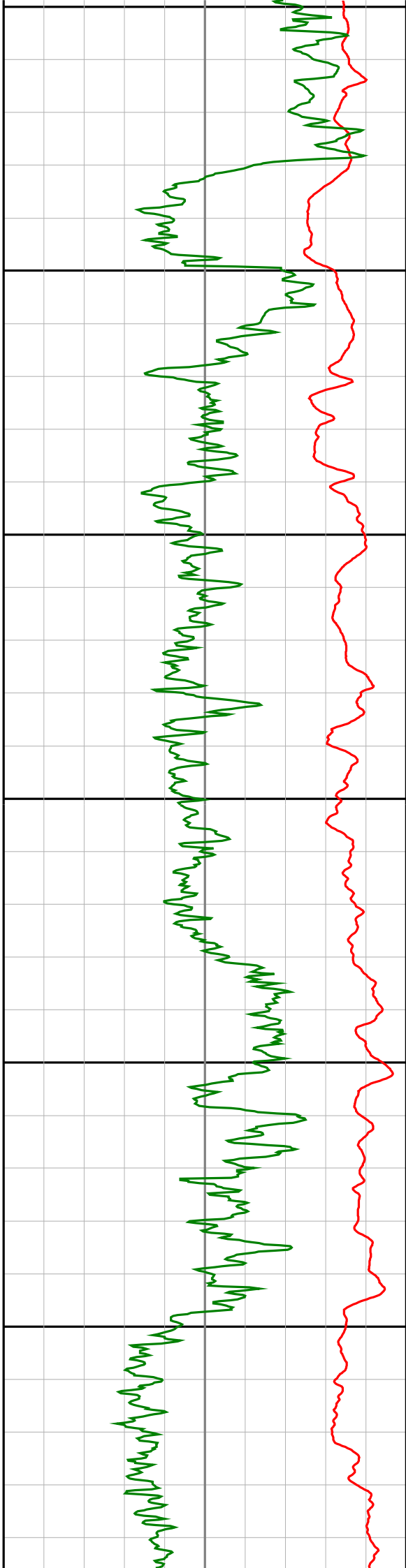
2175

2200

2225

2250





2275

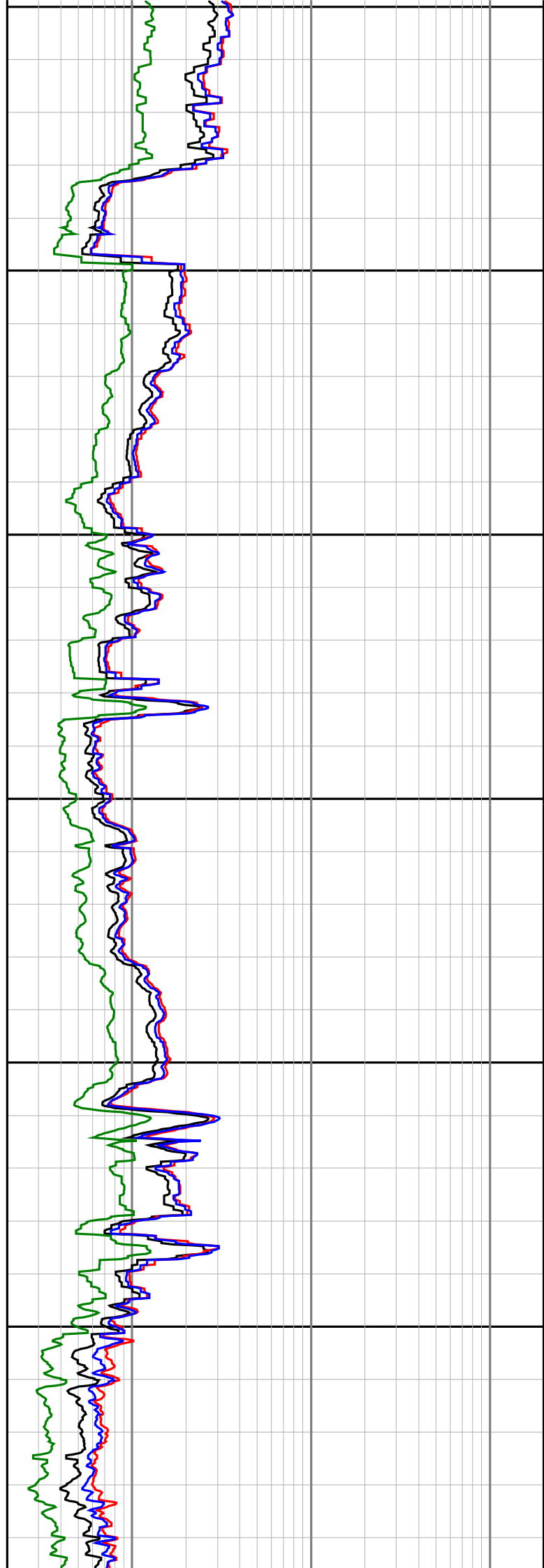
2300

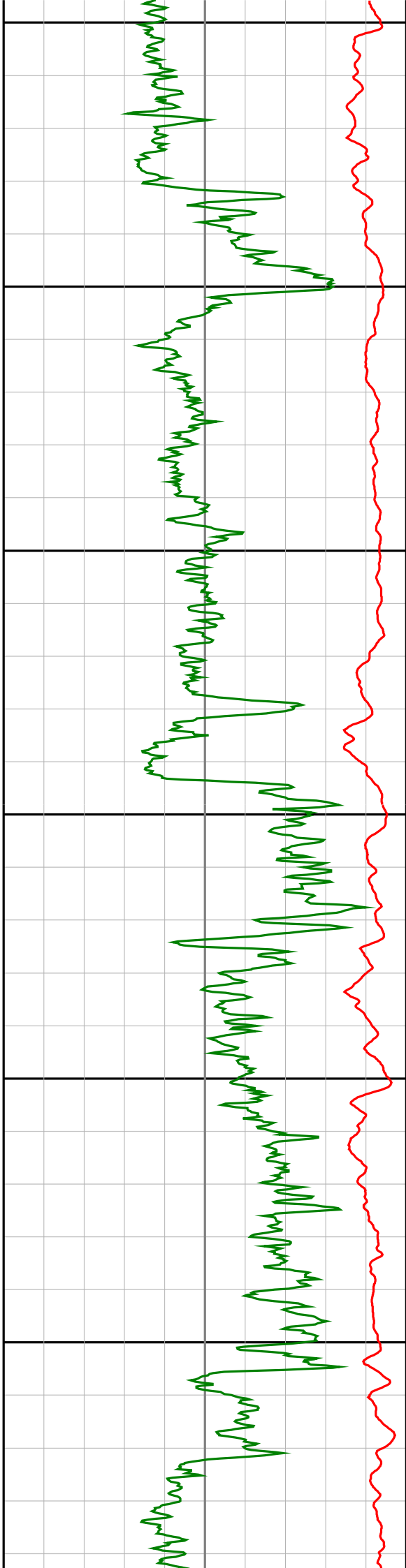
2325

2350

2375

2400





2425

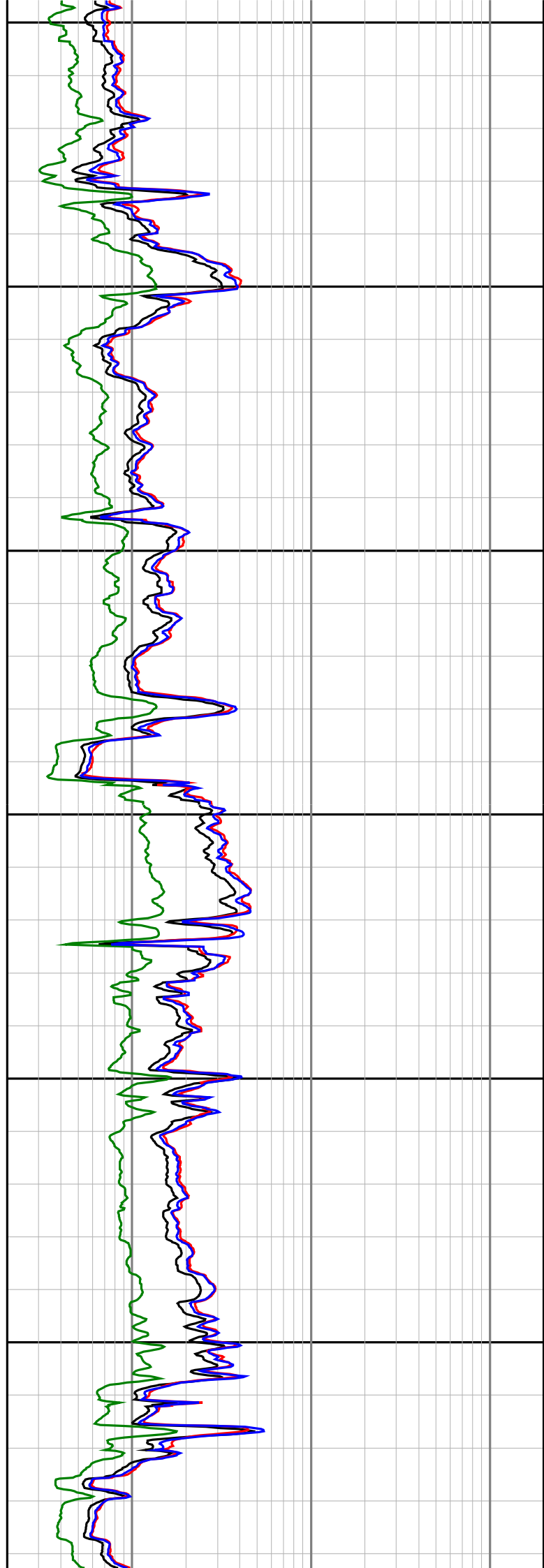
2450

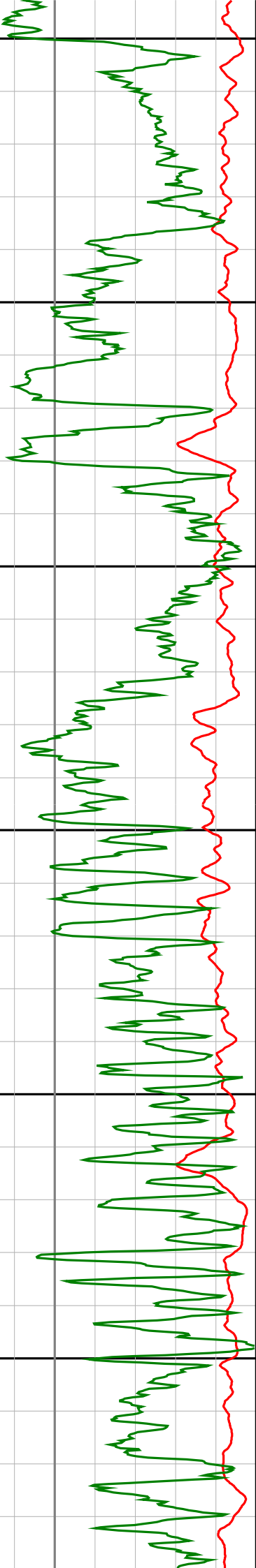
2475

2500

2525

2550





2575

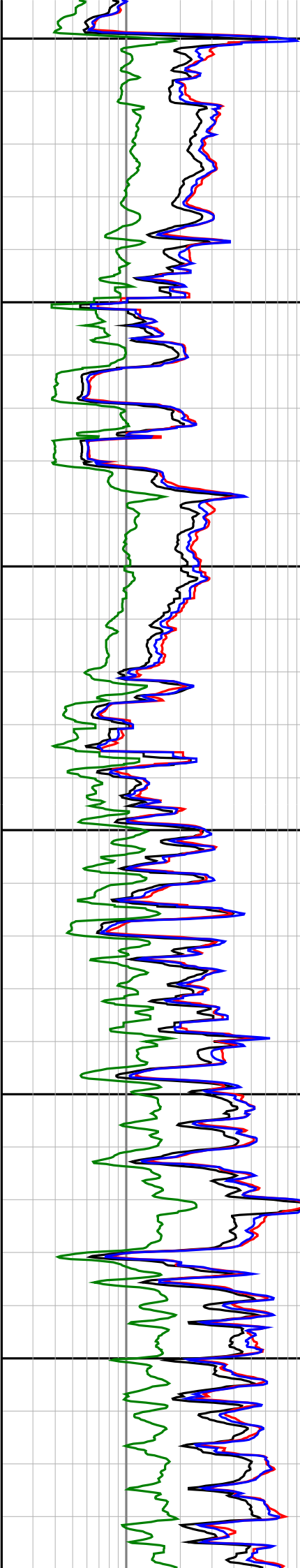
2600

2625

2650

2675

2700



2575

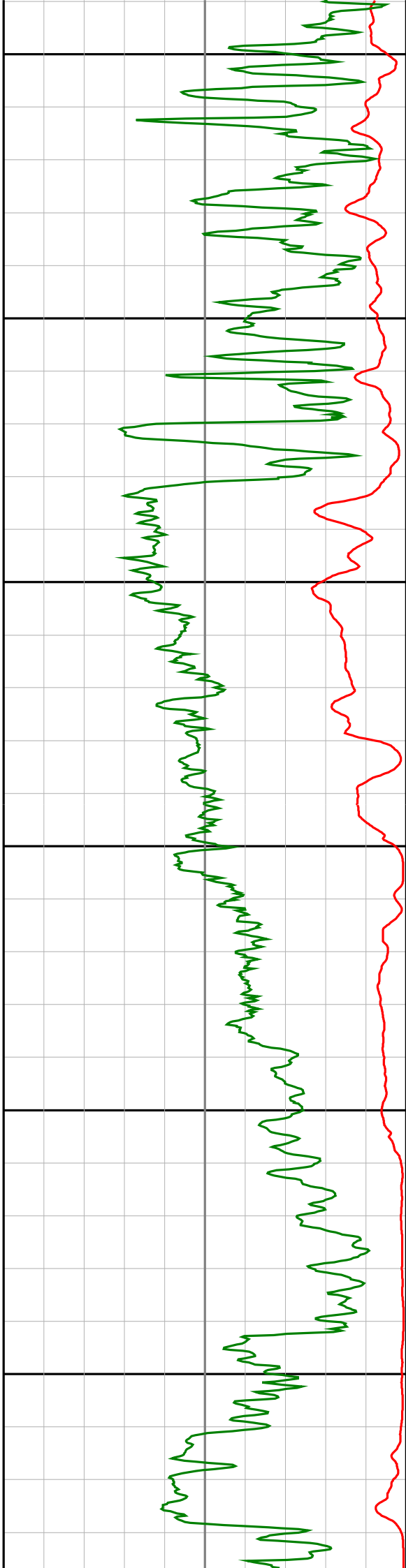
2600

2625

2650

2675

2700



2725

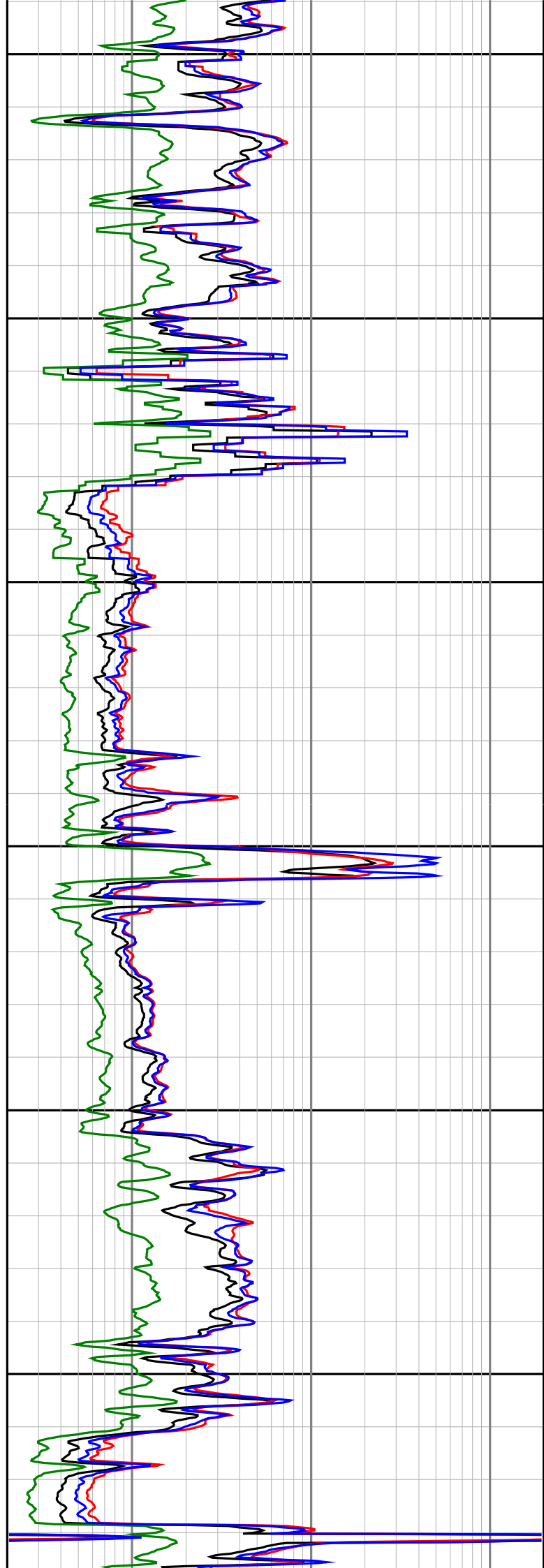
2750

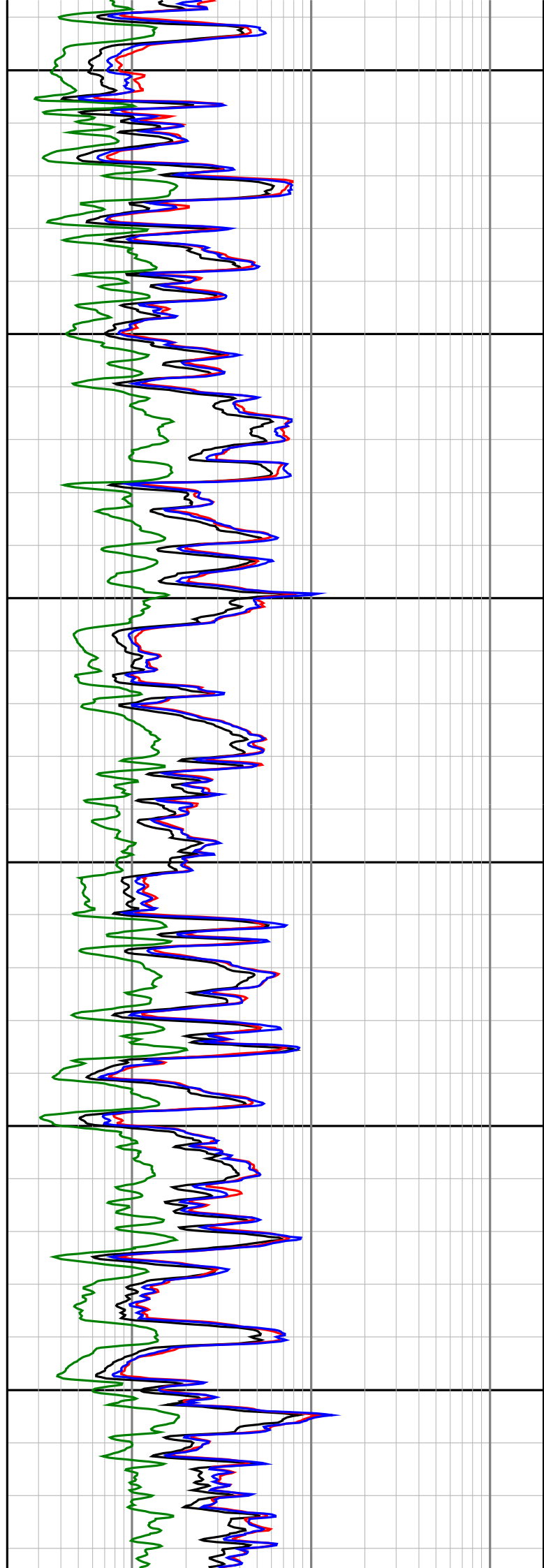
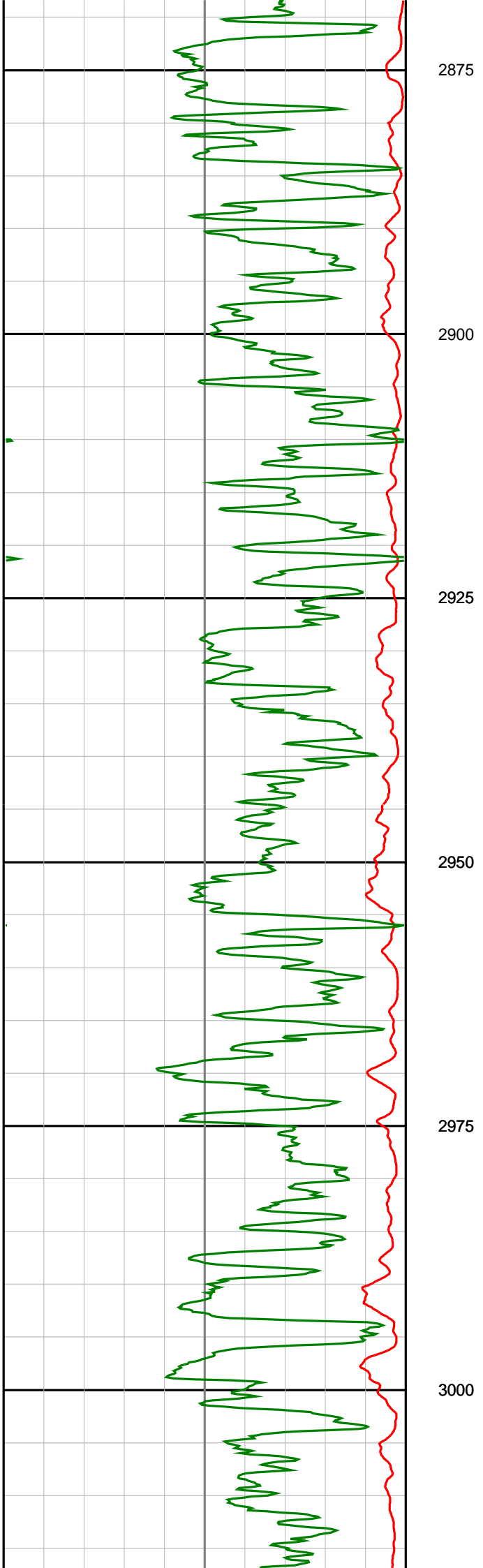
2775

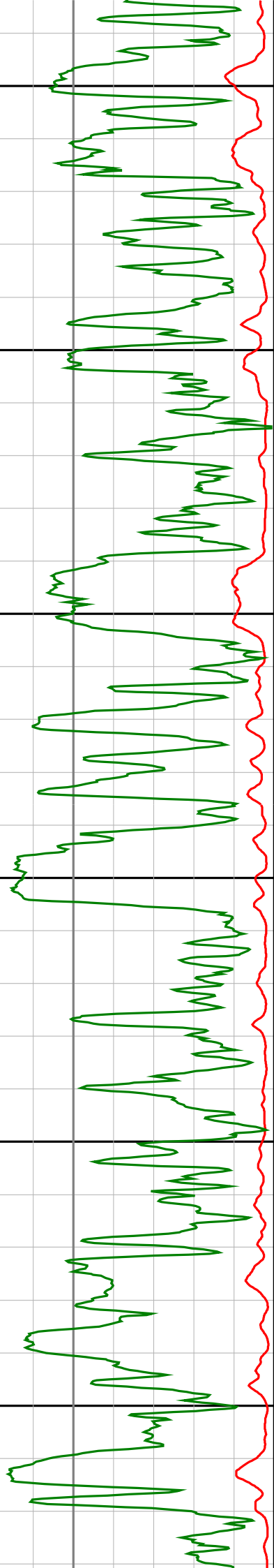
2800

2825

2850







3025

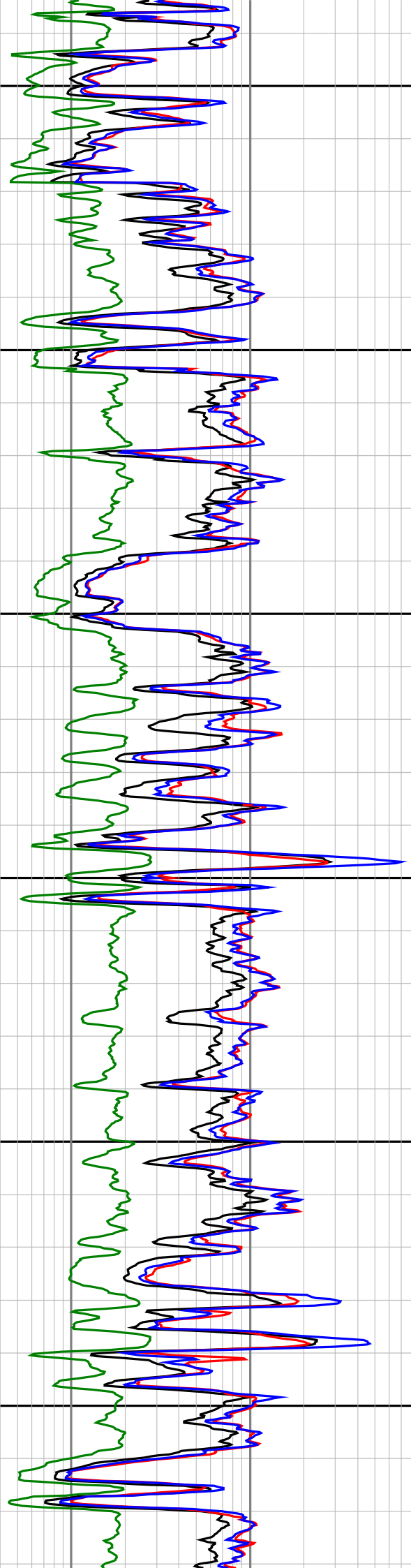
3050

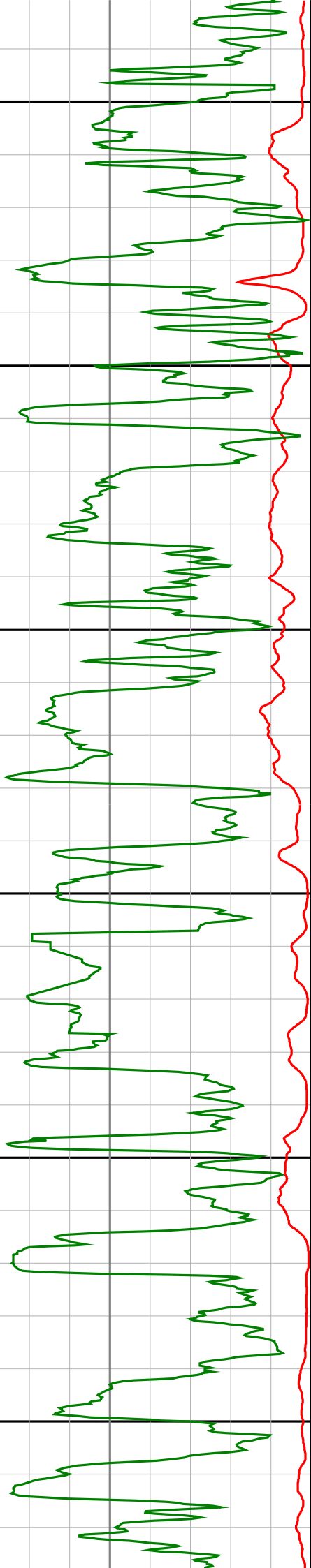
3075

3100

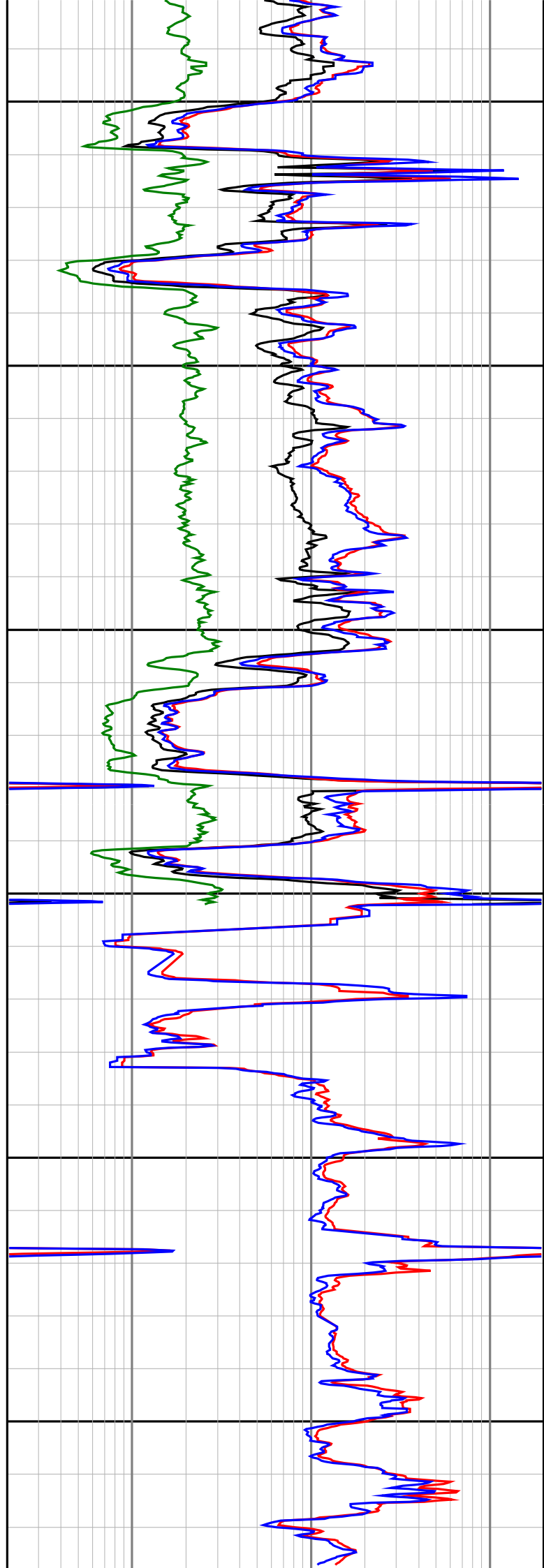
3125

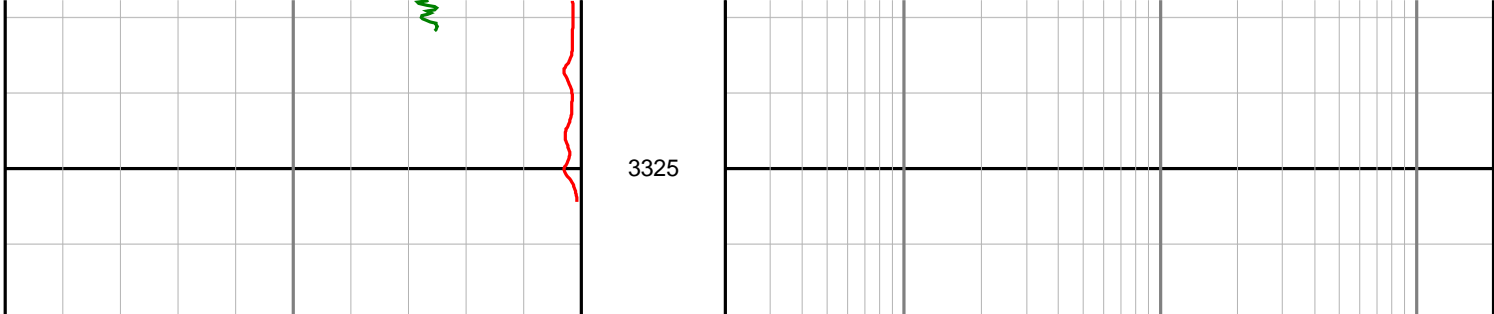
3150





3175
3200
3225
3250
3275
3300





3325

<p>Gamma Ray (SGRC) api</p> <p>0 200</p>	<p>Depth MD 1:500</p>	<p>Ext Shallow Phase Res (SEXP) ohmm</p> <p>0.2 200</p>
<p>Rate Of Penetration (SROP) m/hr</p> <p>500 0</p>		<p>Shallow Phase Res (SESP) ohmm</p> <p>0.2 200</p>
		<p>Medium Phase Res (SEMP) ohmm</p> <p>0.2 200</p>
		<p>Deep Phase Res (SEDP) ohmm</p> <p>0.2 200</p>